

**Council Members Present: (via Zoom):**

Carlo Colella – Vice President for Administration (Chair)  
Scott Lupin – Assoc Dir., Environmental Safety, Sustainability & Risk; Director, Office of Sustainability  
Ann Tonggarwee – Deputy Chief of Staff, Office of the President  
Bryan Quinn – Director of Technical Operation, Department of Electrical & Computer Engineering  
Jennifer Hadden – Associate Professor, Government & Politics  
Giovanni Baiocchi – Associate Professor, Geographical Sciences  
Yueming Lucy Qiu – Professor, Public Policy; Associate Dean, Research and Faculty Affairs (SPP)  
Maureen Kotlas – Executive Director, Environmental Safety, Sustainability & Risk  
Tom McMullen – Special Assistant to the Provost for Facilities  
Colleen Wright-Riva – Assistant Vice President, Division of Student Affairs  
Susan Corry – Director, Engineering & Energy  
Margaret Mothershed – Undergraduate Student Representative  
Paromita Basak – Graduate Student Representative

**Guests Present:**

Javiera King – Administrative Coordinator, Office of the Vice President & Chief Administrative Officer  
David Allen – Executive Director, Department of Transportation Services  
Emily Hightower – Project Manager – Sustainability Measurement and Outreach, Office of Sustainability

Meeting Highlights

**Welcome**

**SustainableUMD Annual Progress Report – E. Hightower**

The Office of Sustainability presented on annual progress in calendar year 2022 (Appendix A). Notable updates include:

- The University continues to identify sustainability as a key theme, with inclusion in the Campus Facilities Plan and with the Grand Challenges Research Grants
- Maintained a 55% reduction in net greenhouse gas emissions compared to a 2005 baseline
- 13% of campus built to LEED Silver or equivalent, 58% institutional diversion rate for waste, 174 stormwater BMPs, and 14% reduction in per plate food emissions (through the Cool Food Pledge)
- Over 20,500 students reached over the history of the Green Terp and Green Chapter programs
- Approximately \$40 million to support ShuttleUM fleet bus electrification

The presentation also included a brief summary of the Green Office program. After twelve years, the Office of Sustainability is updating the program to the new Green Workspace pilot. The progress presentation included a two-slide summary of the program and staff survey data on behaviors.

Post-presentation discussion included questions about increased water use and new construction versus retrofitting older buildings.

### **Sustainability Fund Proposals Presentation – M. Mothershed**

Margaret Mothershed presented to the Council on the Sustainability Fund Budget and proposals (Appendix B). The Sustainability Fund Review Committee estimates having a revenue of \$650,000 and recommends funding for two proposals:

- *Native Biodiversity - An Undergraduate Outdoor Classroom: (\$68,510)*
  - This project requests funding to create an outdoor classroom at the UMD Golf Course. The specific area where the classroom will be located was damaged by a storm a few years ago. They want to add greater diversity of vegetation and habitat by planting native plants and pollinator friendly plants.
  - The Council had some questions regarding accessibility to the classroom and possible disruption to people golfing.
  - The Council **unanimously approved** this project proposal.
- *DSA Sustainability Collaborative: (\$74,760)*
  - This project was submitted by Colleen Wright-Riva. The Department of Student Affairs is requesting the fund cover cost of nine intern salaries for one year. These interns would work in different units with DSA such as Dining Services and Residential Life. The request also included covering expenses related to give aways and attendance to a local conference.
  - The Council had some questions regarding the amount allocated for giveaways and C. Wright Riva addressed the council's concerns.
  - The Council **unanimously approved** this project proposal. Colleen Wright-Riva abstained.

### **Open Forum**

Scott Lupin shared that the Green Office Program has been retired and the Office of Sustainability is now piloting the Green Workspace Program. He asked Taylor Brinks to share some information about the new program with the Council. Taylor Brinks explained that there had been a general decline in the number of offices certifying as a Green Office and that staff wanted more opportunities to be recognized for the work that they were doing in sustainability. The name changed to be more inclusive of spaces that aren't typical offices. She also shared that the Office of Sustainability recently launched a Sustainability Badge for staff that recognizes their individual actions to lead a more sustainable lifestyle.

*Adjourn 2:00PM*

### **Appendices:**

*Appendix A: SustainableUMD Annual Progress Report (2022-2023)*

*Appendix B: Sustainability Fund Proposals*



**GRANT RECOMMENDATIONS November 2023**



# Sustainability Fund Budget for FY24



FY24 General Info		Expenses	
Fund Balance as of July 1st*	\$284,410	Sustainability Mini-Grants**	\$20,000
FY24 <b>Estimated</b> Revenue	~\$650,000	Carbon Offsets for Carbon Neutral Undergrad Commuting**	\$100,000
<b>Proposals Received</b>	13	Grants Issued to-date	x
FY24 Total requested so far	\$1,446,801.50	Today's Grant Recommendations	\$143,271
FY24 Requests still pending	\$1,446,801.50	Remaining Balance if recommendations are approved*	~\$671,139

\*Estimated

\*\*Maximum allowed





## Projects Recommended for Funding



1. Native Biodiversity - An Undergraduate Outdoor Classroom
2. DSA Sustainability Collaborative



## Native Biodiversity - An Undergraduate Outdoor Classroom



**Requested:** \$68,510

**SFRC recommendation:** \$68,510

**Summary:** The Golf Course is seeking funding to convert part of the course into an outdoor classroom featuring native and pollinator friendly plants. This area was severely damaged in a storm in 2022 so they are looking to repurpose the space while providing educational opportunities.



**Submitted by:** Jeff Maynor, Director of Golf



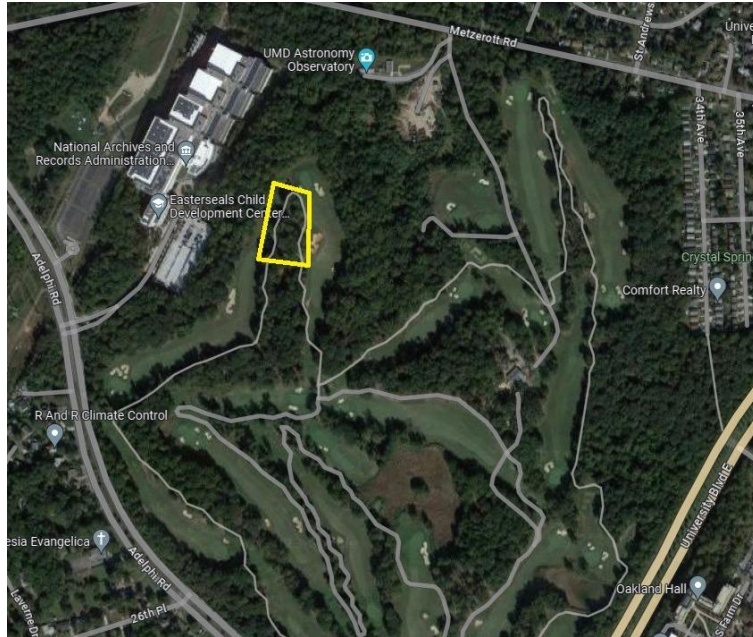
## Native Biodiversity - An Undergraduate Outdoor Classroom



- The Golf Course outlined these impacts:
  - A greater diversity of native vegetation and habitat
  - Greater carbon capture and better transpiration
  - Mitigation of stormwater runoff
  - More learning opportunities for undergraduate students
    - At least five courses would include this site in the material/visits
    - Including opportunities for service projects or hands-on support in designing and preparing the site.
- Golf Course staff will maintain the site after the initial costs for plants and installation.
- They also submitted letters of support from:
  - William Hubbard, Assistant Director, Environment, Natural Resources & Sea Grant Programs
  - Elliott Kenney, Graduate Student of Landscape Architecture
  - Kenneth Ingram, Lindsay Barranco, Institute of Applied Agriculture
  - Meg Smolinski, UMD Arboretum & Botanical Gardens
  - Dr. Shannon Browne, Biology Professor
  - SGA Sustainability Committee
  - ENSPire (Environmental Science and Policy student advisory board)



# Native Biodiversity - An Undergraduate Outdoor Classroom





## Native Biodiversity - An Undergraduate Outdoor Classroom



Type	Notes	Cost
Plants	Grasses, pollinator plants, trees, shrubs	\$28,045
Tools and Labor	Traditional and Battery Powered, installation of signage and bird and bee houses	\$26,400
Other necessary materials	Mulch, Wood chips, Bee and Bird Houses, Educational Signage	\$14,065
<b>Total</b>		<b>\$68,510</b>



# DSA Sustainability Collaborative



**Requested:** \$74,761

**SFRC recommendation:** \$74,761

**Summary:** The Division of Student Affairs wants to create a Student Sustainability Collaborative. There would be undergraduate internship opportunities in divisions such as Residential Facilities, Good Tidings Catering, Dining Services, Resident Life and Conferences and Visitor Services.

**Submitted by:** Colleen Wright-Riva, Assistant VP for Student Affairs





# DSA Sustainability Collaborative



- Students would work with DSA to further on campus sustainability while receiving sustainability experience.
- Department of Resident Life is hiring a full-time Sustainability Coordinator and providing two Associate Directors who will oversee the program.
- Proposed internship positions:
  - Multicultural Advocate Intern for Environmental and Social Justice
  - DRF Energy and Utilities Intern
  - DRF Operations Intern
  - Good Tidings Catering and Conferences & Visitor Services Intern
  - Dining Services Communications Intern
  - Dining Services Green Dining Intern
  - 2 Terp to Terp Student Managers
  - Collaborate Student Manager Position
- Letters of Support include:
  - Student staff in DSA
  - Joann Prosser, Interim Director of Assessment, DSA
  - Our own Dr. Perillo



# DSA Sustainability Collaborative



Type	Notes	Cost
9 Intern Salaries	10-15 hours per week at \$15-\$16 per hour depending on the position	\$29,280 per semester
Fringe Benefits		\$2,225 per semester
Prizes and Incentives/Conference Attendance fees	Fees for Sustainability and DEIJ Conference Attendance (\$750 per intern)	\$11,750
<b>Total</b>		<b>\$74,760</b>



# SustainableUMD Progress Summary

*Emily Hightower, Office of Sustainability*

*November 3, 2023*



# OVERVIEW:

- **Review of Sustainability Goals**
  - *UN Sustainable Development Goals*
  - *Sustainability in Fearlessly Forward*
  - *Campus Sustainability Goals*
- **Sustainability at UMD**
  - *General Update*
  - *Progress by Campus Goals*
- **Highlights from 2022**
  - *Grand Challenges Grants*
  - *Climate Change Research Highlight - April 2022*
  - *50th Year of Shuttle-UM & Bus Electrification*
  - *Campus Creek Restoration*
  - *Green Workspaces*
  - *Bee Campus USA Certification*
- **Office of Sustainability Updates**
  - *Green Workspaces*
  - *Climate Action Plan 3.0*



# UN SUSTAINABLE DEVELOPMENT GOALS



# SDG 1: No Poverty

## Example SDG Targets:

- *Target 1.2: Reduce the number of men, women, and children living in poverty in all its dimensions by half by 2030*
- *Target 1.5: By 2030, reduce people living in poverty to exposure and vulnerability of climate-related extreme events and other economic, social and environmental shocks and disasters*

## Connection to UMD Programs:

- Terp to Terp Campus ReUse Store
- Student Crisis Fund
- Campus Pantry
- Financial Wellness Seminars and Courses
- Climate Resilience Research



# **SDG 9: Industry, Innovation and Infrastructure**

## **Example SDG Targets:**

- *Target 9.1: Develop quality, reliable, sustainable & resilient infrastructure to support economic development & human well-being, with a focus on affordable & equitable access for all*

## **Connection to UMD Programs:**

- Maryland Energy Innovation Institute
- Greater College Park & CP-CUP
- School of Architecture, Planning & Preservation
- Small Business Development Center
- Do Good Institute



# **SDG 12: Responsible Consumption and Production**

## **Example SDG Targets:**

- *Target 12.2: By 2030, achieve the sustainable management and efficient use of natural resources*
- *Target 12.5: By 2030, substantially reduce waste generation through prevention, reduction, recycling & reuse*

## **Connection to UMD Programs:**

- Terp Farm, Farmers Market, & Dining at UMD
- College of Agriculture and Natural Resources
- Recycling & Solid Waste Unit
- Regulated Hazardous Waste Program
- Engineering Sustainability Store



# SUSTAINABILITY COUNCIL GOAL FRAMEWORK



## **Carbon Neutrality**

*100% carbon neutral by 2025 compared to 2005, site energy conservation measures, expansion of renewable sources*



## **Education for Sustainability**

*Formal and informal opportunities for students to gain knowledge/skills and to collaborate with staff/faculty on solutions*



## **Local and Global Impact**

*Partner to further sustainability in Maryland and beyond, encourage sustainable procurement at UMD, support green dining programs*



## **Smart Growth**

*Alternative transportation, environmental stewardship in landscape, high performance building and utility design*



## **Sustainable Water Use**

*Reduce purchases of potable water, expand harvesting and reuse, responsibly manage stormwater to protect the Chesapeake Bay*



## **Waste Minimization**

*Divert 75% from the landfill, reduce solid waste generated per person 1% annually, increase cleaning and waste sorting*

# STATE & UNIVERSITY POLICIES — SUSTAINABILITY



## **Carbon Neutrality**

Climate Action Plan (2009, 2015, 2023)

Buildings and Energy Work Group Report (2013)

President's Energy Initiatives (2014)

Carbon Offset Workgroup Report (2015)

MD Department of Government Services Energy  
Executive Reporting (2018, 2021)

NextGen Energy Program

Climate Solutions Now Act (2022)



## **Smart Growth**

Facilities Master Plan (2011, 2017, 2023)

Design Criteria Facility Standards (DCFS)

High Performance Buildings Act (2010)

Sustainable Transportation Policies



## **Local and Global Impact**

Environmentally Preferable Procurement Policy

Cool Food Pledge

Hunger-Free UMD



## **Waste Minimization**

Maryland Recycling Act

Maryland Composting Law (2023)



## **Education for Sustainability**

University Strategic Plan (2022)



## **Sustainable Water Use**

Sustainable Water Use and Watershed Report  
(2014, 2022)

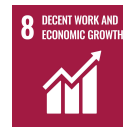




## FEARLESSLY FORWARD

Released in February 2022, the new University Strategic Plan, *Fearlessly Forward*, includes sustainability as a key theme. Divided into four principles, the strategic plan is easily connected to campus sustainability goals and international sustainable development frameworks.

1. **We reimagine learning.**
2. **We take on humanities grand challenges.**
3. **We partner to advance the public good.**
4. **We invest in people and communities.**





## CAMPUS FACILITIES PLAN

On September 7th, President Pines presented the Campus Facilities Plan to the USM Board of Regents finance committee.

The Campus Facilities Plan “offers a guiding document for potential construction projects and mobility, infrastructure and sustainability efforts. It addresses longstanding challenges facing UMD, including a shortage of undeveloped land and a diverse campus topography, and aligns development priorities—sustainability, innovative buildings and facilities, pedestrian-friendly mobility and wellness—with future growth.” (Haslam, [Maryland Today](#))





## CLIMATE ACTION PLAN 3.0

- ▶ The Office of Sustainability is updating the Climate Action Plan (CAP 3.0).
  - ▶ CAP 2.0 was published in 2015. A minor update -- CAP 2.1 -- was published in 2021.
- ▶ Strategies provided by key stakeholder units review.
  - ▶ Stakeholders include Facilities Management, Department of Transportation Services, academic units, and others.
- ▶ CAP 3.0 includes existing and new programs.
  - ▶ Strategies reflect changing markets, technology, funding, and goals.

# Sustainability at UMD





# SUSTAINABILITY PROGRESS UPDATE

The SustainableUMD Progress Hub dashboards are up-to-date with 2022 data.



## Carbon Neutrality

**100%** renewable purchased electricity  
**37%** of electricity generated at CHP  
**31,935 MTCO<sub>2</sub>e** of carbon offsets (18%)



## Education for Sustainability

**200** certified Green Offices (2011-2022)  
**254** sustainability minor enrollments  
**1,717 students** certified Green Terp



## Local and Global Impact

**14%** emissions reduction per plate (2017)  
**57%** cities certified Sustainable MD  
**19,046 lbs** produce from Terp Farm



## Smart Growth

**9.13 kCO<sub>2</sub>e/gsf** emissions intensity  
**13%** of campus built as LEED Silver  
**15 years** as Tree Campus Higher Ed



## Sustainable Water Use

**16%** increase in water consumption (2006)  
**874 acres** of permeable surfaces  
**174** stormwater management facilities



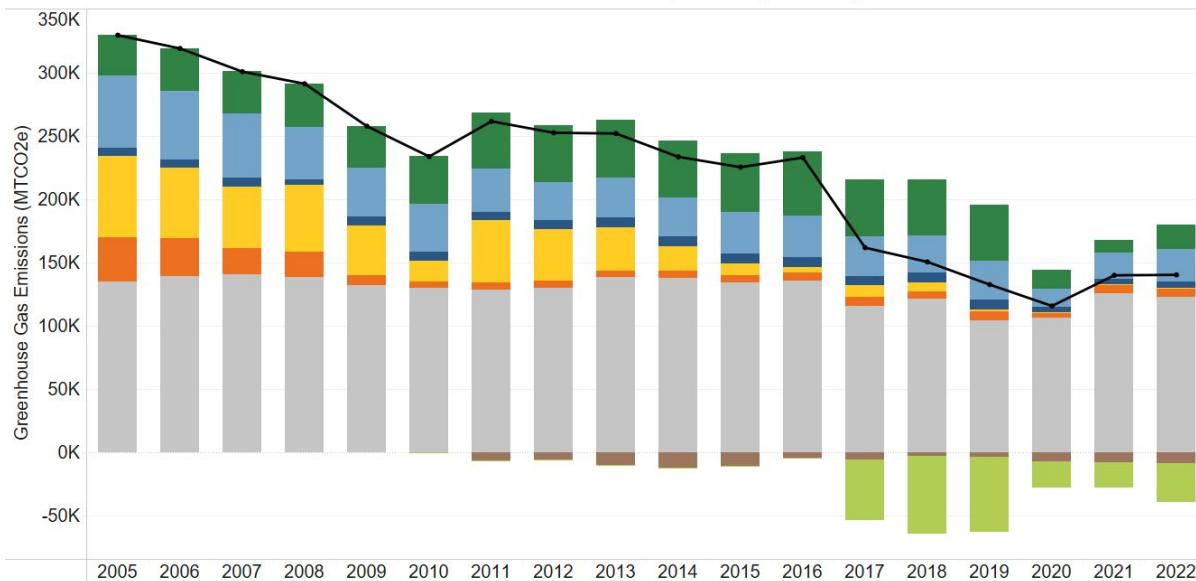
## Waste Minimization

**58%** institutional diversion rate  
**43%** individual recycling rate  
**1,430 tons** of compost generated



## University of Maryland Greenhouse Gas Emissions

Metric Tons of Carbon Dioxide Equivalent (MTCO<sub>2</sub>e)



**147,115 MTCO<sub>2</sub>e**

net greenhouse gas emissions

**55.4% reduction**

compared to **2005** baseline (**Net**)

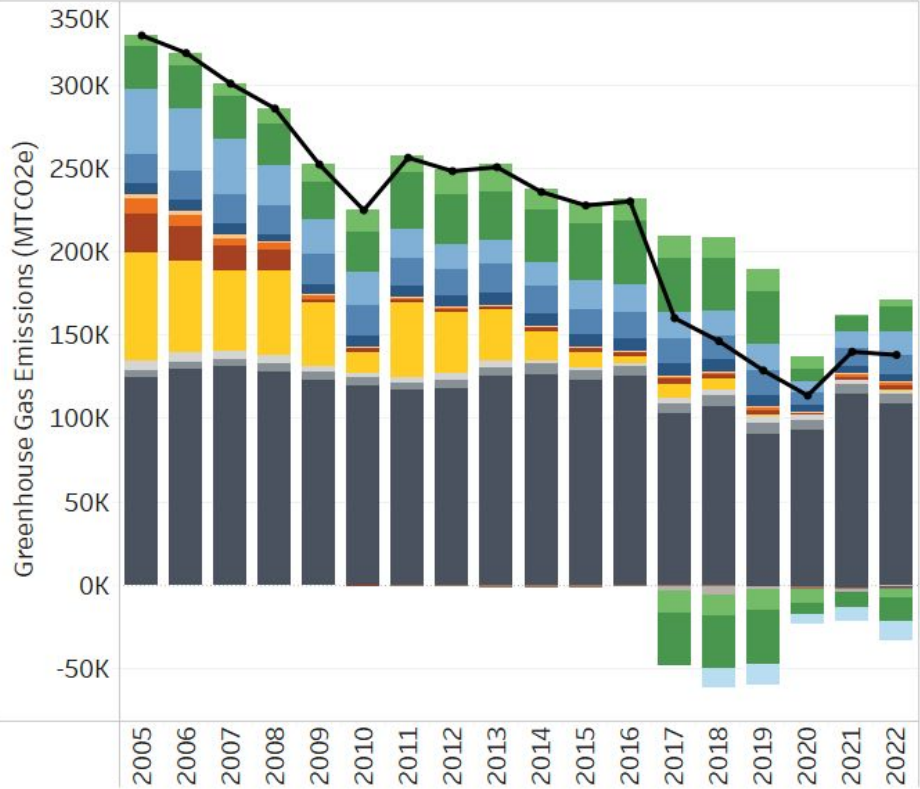
**0.2% increase**

compared to **2021** data (**Net**)

### Net Greenhouse Gas Emissions

- Air Travel: Directly Financed and Study Abroad
- Faculty, Staff and Student Commuting
- UMD Fleet Vehicles
- Purchased Electricity
- Agriculture (Animals and Fertilizer), Solid Waste, and Refrigerants/Chemicals
- Combined Heat and Power Plant (CHP) and Other Stationary Sources
- Verified Carbon Offsets
- Non-Additional Sequestration

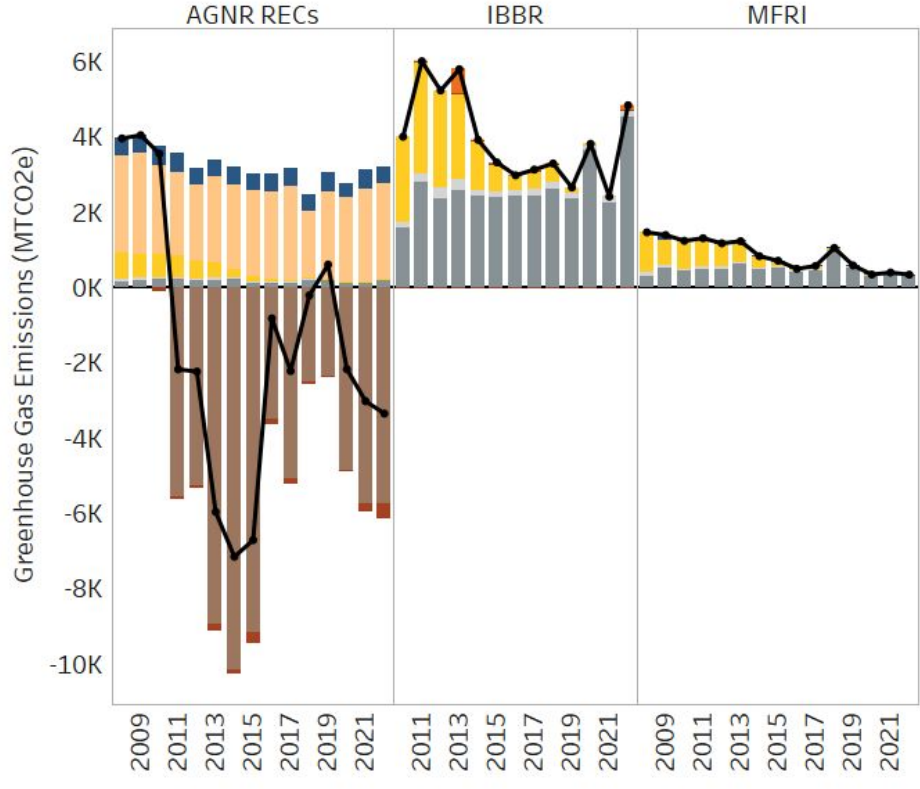
Main Campus, College Park



Emissions Source

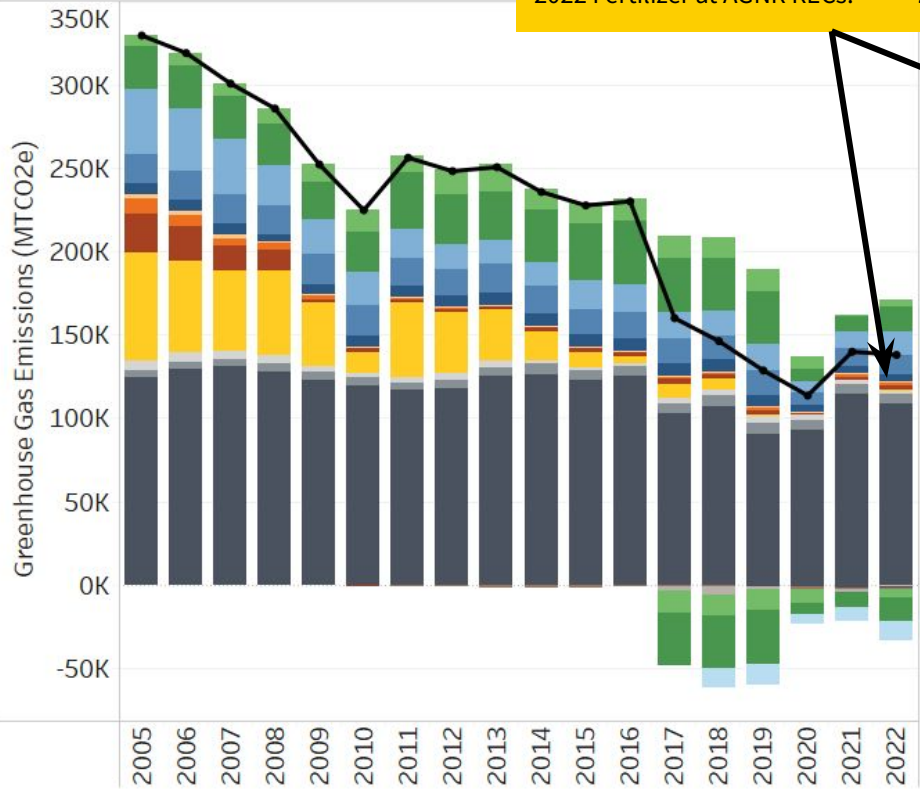
- Study Abroad Air Travel
- Directly Financed Air Travel
- Student Commuting
- Staff Commuting
- Faculty Commuting
- Direct Transportation
- Fertilizer & Animals
- Refrigerants & Chemicals
- Solid Waste
- Purchased Electricity
- T&D Losses
- Other Stationary Fuel

Auxiliary Campuses



- Co-gen Electricity
- Co-Gen Fuel
- Undergrad Commuting Offsets
- Air Travel Offsets
- Study Abroad Offsets
- Additional Offsets
- Non-Additional Sequestration
- Compost Offset

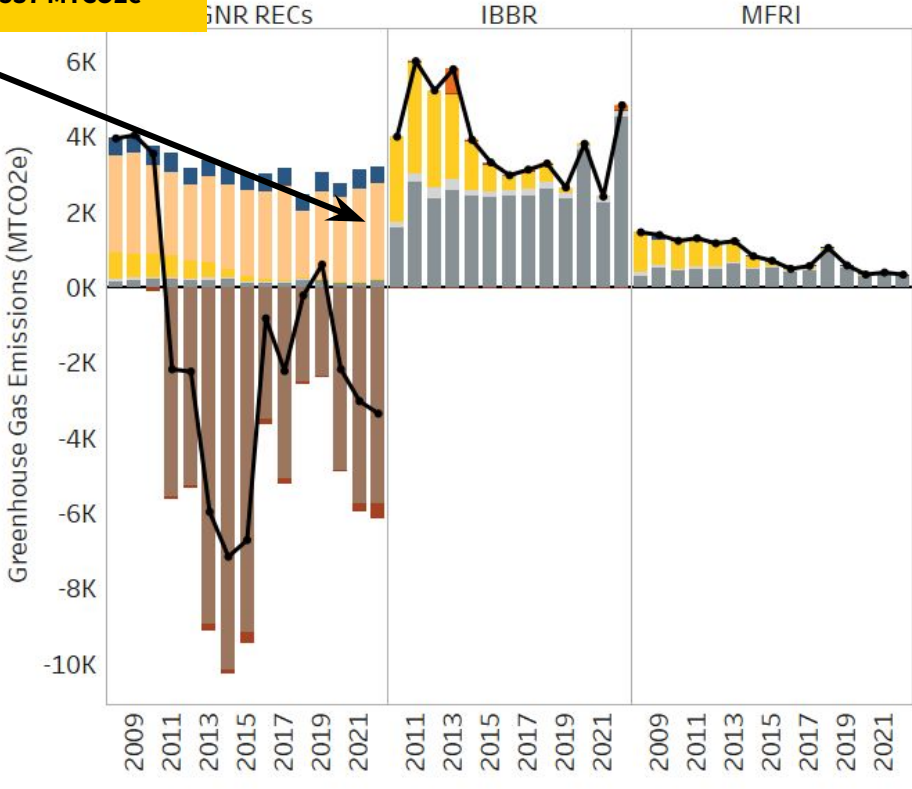
Main Campus, College Park



2022 Fertilizer at College Park:  
2022 Fertilizer at AGNR RECs:

**56 MTCO<sub>2</sub>e**  
**2,537 MTCO<sub>2</sub>e**

AGNR RECs



Emissions Source

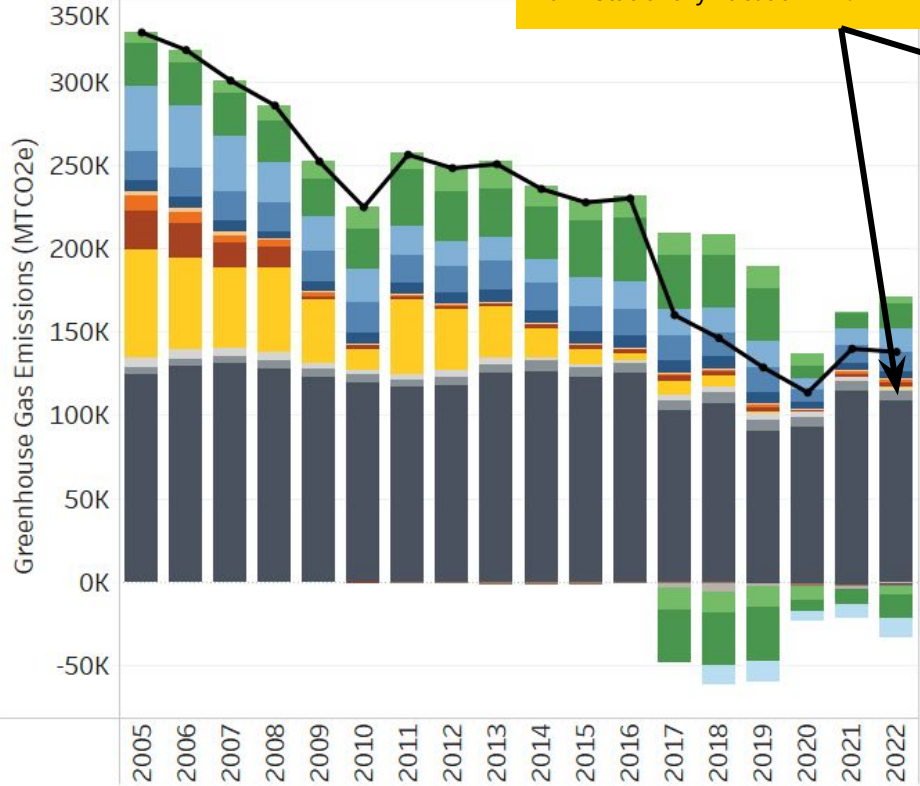
- Study Abroad Air Travel
- Faculty Commuting
- Solid Waste
- Directly Financed Air Travel
- Direct Transportation
- Purchased Electricity
- Student Commuting
- Fertilizer & Animals
- T&D Losses
- Staff Commuting
- Refrigerants & Chemicals
- Other Stationary Fuel

- Co-gen Electricity
- Study Abroad Offsets
- Co-Gen Fuel
- Additional Offsets
- Undergrad Commuting Offsets
- Non-Additional Sequestration
- Air Travel Offsets
- Compost Offset



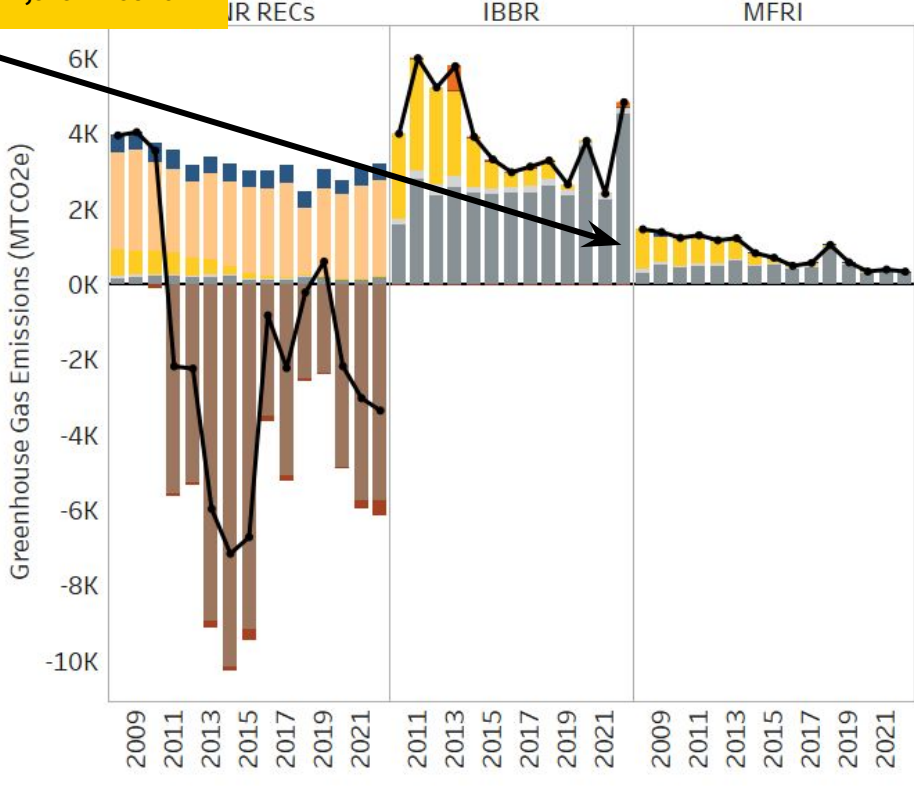
Main Campus, College Park

2022 Stationary Fuel at College Park: **6,131 MTCO<sub>2</sub>e**  
2022 Stationary Fuel at IBBR: **4,545 MTCO<sub>2</sub>e**



Emissions Source

- Study Abroad Air Travel
- Faculty Commuting
- Solid Waste
- Directly Financed Air Travel
- Direct Transportation
- Purchased Electricity
- Student Commuting
- Fertilizer & Animals
- T&D Losses
- Staff Commuting
- Refrigerants & Chemicals
- Other Stationary Fuel



- Co-gen Electricity
- Co-Gen Fuel
- Undergrad Commuting Offsets
- Air Travel Offsets
- Study Abroad Offsets
- Additional Offsets
- Non-Additional Sequestration
- Compost Offset

# DEVELOPING CAMPUS & GREATER COLLEGE PARK

7

**CARBON NEUTRAL NEW  
DEVELOPMENT BUILDINGS**

24

**GREEN BUILDINGS ON CAMPUS  
BETWEEN 2010-2022**

2.16 million

**SQFT GREEN BUILDINGS ADDED  
BETWEEN 2010-2022, 12.5% INCREASE  
IN TOTAL CAMPUS BUILDING SPACE**



# DEVELOPING CAMPUS & GREATER COLLEGE PARK

14.7K

BEDS ON- OR NEAR TO  
CAMPUS (13% INCREASE  
COMPARED TO 2011)

438K

RIDES ON SHARED  
MOBILITY SERVICES

\$150,000

TO SUPPORT THE CPCUP  
HOMEOWNERSHIP PROGRAM  
(78 HOMES PURCHASED SINCE 2015)



17 PARTNERSHIPS  
FOR THE GOALS



11 SUSTAINABLE CITIES  
AND COMMUNITIES





# STORMWATER BEST MANAGEMENT PRACTICES

174

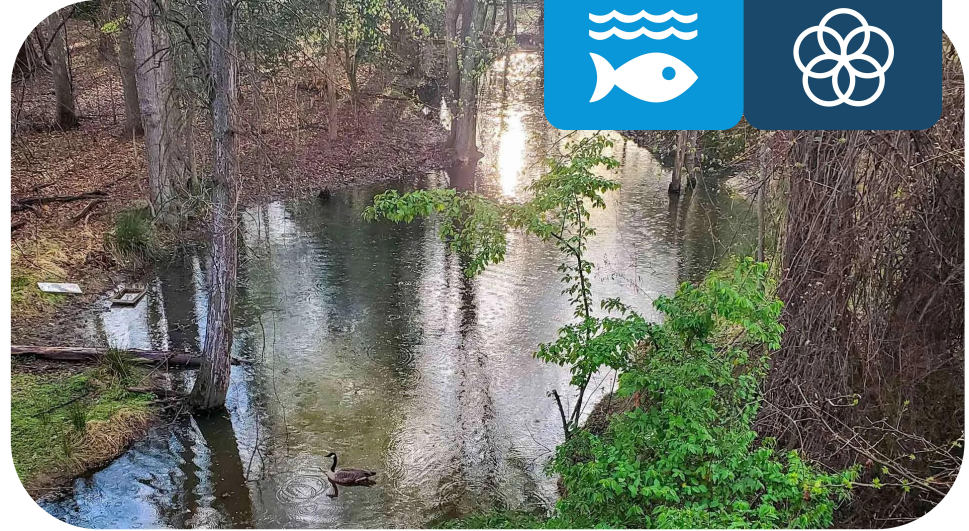
STORMWATER BMPS  
ON CAMPUS

237

UMD STAFF RECEIVED  
STORMWATER TRAINING

\$1.7 million

FOR PHASE 2 OF CAMPUS CREEK  
RESTORATION AWARDED IN 2022



14 LIFE  
BELOW WATER



17 PARTNERSHIPS  
FOR THE GOALS



# ON-CAMPUS OUTREACH FOR STUDENTS

41

ON-CAMPUS EVENTS,  
INCLUDING EARTH FEST &  
MARYLAND DAY

617

INDIVIDUALS AT THE  
SUSTAINABLEUMD OUTREACH  
BIKE

20,566

STUDENTS REGISTERED AS GREEN TERPS  
BETWEEN 2012-2023

1,717 REGISTERED IN 2022-2023



# LEADERSHIP IN GREEN PURCHASING

**87%**

REDUCTION IN TOTAL PAPER  
PURCHASING IN 2022  
COMPARED TO 2011

**14%**

REDUCTION IN PER PLATE  
EMISSIONS IN 2022  
COMPARED TO 2017

**\$1.5 million**

SPENT ON GREEN CLEANING PRODUCTS,  
AROUND 72% OF TOTAL CLEANING PURCHASES



**13** CLIMATE  
ACTION



**12** RESPONSIBLE  
CONSUMPTION  
AND PRODUCTION



# EXCELLENCE IN WASTE MINIMIZATION & MANAGEMENT

1,400

SHORT TONS OF COMPOST  
DIVERTED FROM LANDFILLS

18.5K

POUNDS DIVERTED FROM THE  
LANDFILL THROUGH TERP TO  
TERP REUSE STORE

58.4%

INSTITUTIONAL RECYCLING RATE  
40% LESS WASTE GENERATED  
OVERALL COMPARED TO 2005





# Highlights from 2022





# EXCELLENCE IN OPERATIONS

**Throughout the year, UMD celebrated its sustainability legacy, joined new national organizations, and received funding to support the next generation of sustainability programs on campus.**

## **50-Years of Shuttle-UM & Bus Electrification Grant:**

- ▶ The Shuttle-UM program and Department of Transportation Services celebrated two major milestones in 2022. In the same year of its golden anniversary, the Shuttle-UM program received around \$40 million in federal funding to support the next generation of all-electric buses.

## **Bee Campus USA:**

- ▶ Through the efforts of students, staff, and faculty on campus, UMD became an affiliate of the Bee Campus USA program. With a photo from the Golf Course BioBlitz, UMD won first place in a pollinator photography competition (Adrienne van den Beemt).

## **Zero Emissions Vehicles Infrastructure Study:**

- ▶ The university has made significant progress on the ZEV Infrastructure Study, including issuing an RFP, onboarding a consultant, and making progress towards a completed plan. Included in the updated Climate Action Plan, the strategy will inform future ZEV-transition strategies.



# SHELL CAMPAIGN FOR CLIMATE CHANGE

In April 2023, the University of Maryland launched the first *Fearlessly Forward* Shell Campaign to build greater awareness of the critical work UMD is doing to address the grand challenge of climate change.

## Highlighting SustainableUMD & EarthFest:

- ▶ In partnership with the Division of Research, SustainableUMD was highlighted in the Research RoundUp. The newsletter included a special highlight of sustainability research and the UMD research website highlighted climate change and sustainability events like EarthFest.

## Earned, Owned, and Paid Advertising Channels:

- ▶ The university's communications team launched a campaign to highlight UMD's climate change related research through earned, owned and paid advertising channels.

## EnTERPrise Research:

- ▶ The Shell Campaign also released two EnTERPrise Research video features on two of the three Grand Challenges Grant Institutional Award winners: Global FEWtures Alliance and Addressing Climate Challenges for a Sustainable Earth.



**IMAGINE A  
CLIMATE OF HOPE** ➤

**WE CAN.**



**#FEARLESSLYUMD**



**UMD IS INVESTING IN RESEARCH  
TO SOLVE THE CLIMATE CRISIS:  
ANOTHER WAY THE UNIVERSITY  
OF MARYLAND IS LEADING  
*FEARLESSLY FORWARD.***

UMD is a global leader in the study of climate change, with more than 200 researchers and experts working across disciplines in partnership with NASA, NOAA and other federal agencies to identify solutions for a global crisis. We're committed to saving the planet—and the turtles.

# GRAND CHALLENGES GRANTS

**A Fearlessly Forward initiative, the Grand Challenges Grants Program supports projects that address emerging social issues, including climate change, social injustice, global health, and educational disparities.**

## **Institutional Awards: \$9,000,000**

- ▶ Three institutional grants were awarded \$1M each in funding for 3 years to projects addressing SDG goals like zero hunger (SDG 2), quality education (SDG 4), and climate change (SDG 13). More than 45 UMD faculty are involved in the research projects.

## **Impact Awards: \$3,000,000**

- ▶ Six impact grants were awarded \$250,000 each in funding for 2 years to projects addressing SDG goals like reduced inequality (SDG 10), peace, justice and strong institutions (SDG 16), and partnerships for the goals (SDG 17). More than 64 UMD researchers are involved in the research projects.

## **Team Projects (\$24,000,000) & Individual Projects (\$3,750,000)**

- ▶ Sixteen teams were awarded \$500,000 each in funding for 3 years to projects addressing SDG goals like good health and well-being (SDG 3), industry and infrastructure (SDG 9), and sustainable cities (SDG 11). More than 76 UMD researchers are on the various teams. Twenty-five researchers were awarded funding of \$50,000 each for 3 years to individual projects addressing a variety of sustainability goals.





# DEVELOPMENTS IN OUTREACH

**Throughout the year, the Office of Sustainability and other units on campus have successfully established new partnerships, launched innovative programs, and increased engagement with campus sustainability initiatives.**

## Maryland Day & the Do Good Challenge

- ▶ For the 25th Maryland Day celebration, the Office of Sustainability and other campus units partnered with the Do Good Challenge scavenger hunt. Through the collaboration, hundreds of campus visitors stopped by the Office of Sustainability booth to take the SDG Climate Action Superhero quiz.

## Promoting the Campus Arboretum & the Cherry Blossom Story Map

- ▶ In the spring, the Arboretum and Botanical Gardens partnered with Campus GIS to create a guide of campus cherry blossom trees. With support from Maryland Today, the official UMD Twitter, and President Pines, more than 4,000 people explored the interactive story map over a three week period. The Office of Sustainability is also partnering with the Arboretum and Botanical Gardens to improve outdoor Sustainability Fund signage.

## Green Workspace

- ▶ The Office of Sustainability is piloting the Green Workspace program as an update to the Green Office program. The Office met with more than ten other universities, spoke with staff on campus, and connected with active Green Office participants during the benchmarking and program planning phases.



# Green Office: Program Impact Review

## ➤ Certified Offices

Over the history of the 12-year program, more than 200 unique offices certified at the Bronze, Silver, Gold, and Platinum levels.

**722**

**GREEN OFFICE AUDITS DURING  
THE CERTIFICATION PROCESS**

**50**

**OFFICES RECERTIFIED MORE  
THAN 5 TIMES**

**197**

**PRE-AUDITS**

**273**

**BRONZE**

**185**

**SILVER**

**58**

**GOLD**

**9**

**PLATINUM**



# Green Office: Program Impact Review

## Staff Survey

More than 30% of the office was required to complete the staff survey as part of the certification process. The survey aimed to indicate sustainable behaviors practiced by UMD staff. This survey helped demonstrate the effectiveness of programming over time and identify areas to continue engaging staff and faculty in green behaviors. The table to follow highlights some behaviors that were already adopted by participating offices and others with significant improvement over the 12-year program.

Green Office Behavior ( <i>staff that indicate “YES” to the following statements</i> ):	2011	2017	2022
I turn off lights when leaving for more than 10 minutes (my office, common rooms, bathrooms).	98.3%	96.7%	96.7%
I compost food scraps and paper towels.	32.8%	68.5%	91.8%
I am familiar with the UMD Climate Action Plan.	8.6%	26.1%	85.3%
When I need to purchase supplies or other items for office use, I check for and select sustainable items.	0.0%	42.4%	68.9%
I have changed my commuting habits (biking, walking, carpooling, or using public transportation).	0.0%	70.7%	68.9%



# Questions?

Contact: Office of Sustainability  
[sustainability@umd.edu](mailto:sustainability@umd.edu) | @SustainableUMD

Contact: Emily Hightower  
[ehightwr@umd.edu](mailto:ehightwr@umd.edu) | 301-405-5408





